

Caution: wear safety glasses when assembling the Basket Weeder Drive Sprockets. Wear gloves when handling thread locker.

The following instructions are for installing the new style drive sprockets only. Assemble Basket Weeder and install spacers, drive chain etc. according to the Basket Weeder Frame Kit assembly instructions (49-4052 or 49-4053). Follow all safety instructions in the Basket Weeder Frame Kit assembly instructions.

1. Unpack everything from the box. The box should contain the following parts.

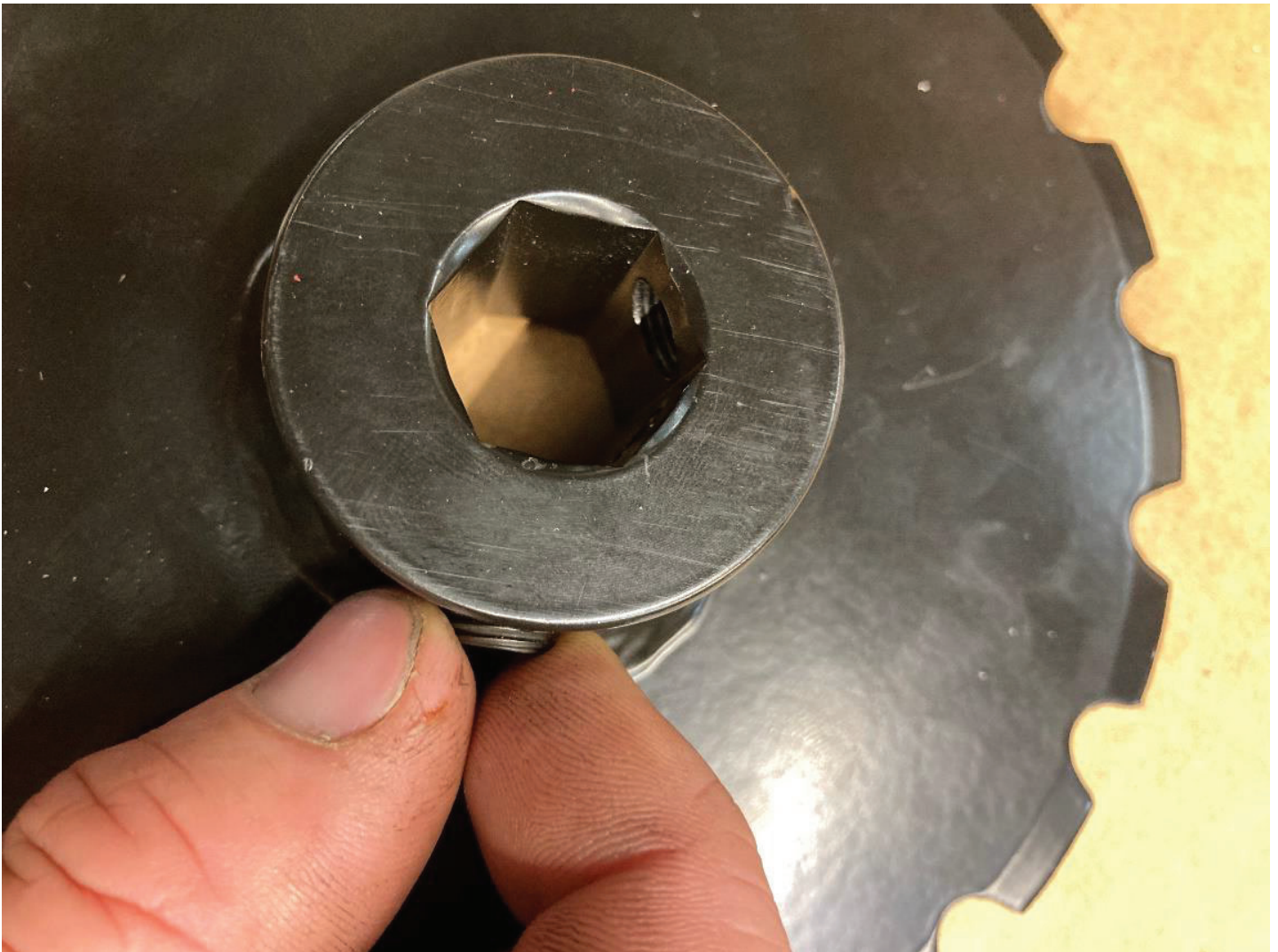
1	81-0169	Chain, Roller #2040 x 47"
4	85-SS35	Socket Set Screw, 3/8-24 X 5/16
1	AW-1085	Spacer, Axle 1.375"
2	AW-1086	Spacer, Axle 1"
1	AW-1093	Spacer, Axle 0.625"
1	AW-6103	Weldment, Sprocket, #20/40 10 Tooth
1	AW-6104	Weldment, Sprocket, #20/40 18 Tooth
1	72-0050	Hex Drive, 3/16"
1	72-0051	Thread locker, 2ml, Red High Strength



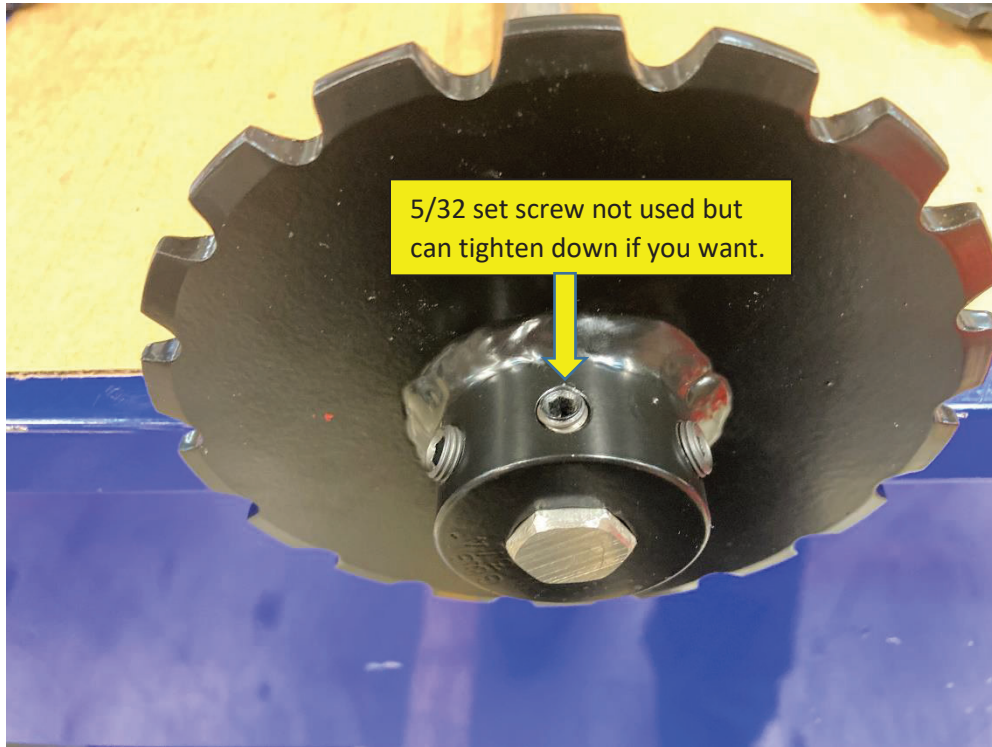
49-4053 Basket Weeder Sprocket Assembly Instructions

2. Drive Kit is to be installed on the left hand side of the Basket Weeder (left side as your sitting on the seat of the tractor) unless you are installing on an 80" Basket Weeder, in which case there will be drive sprockets on both sides. The bigger of the two sprockets will be on the front basket weeder shaft, and the smaller one will be on the rear.

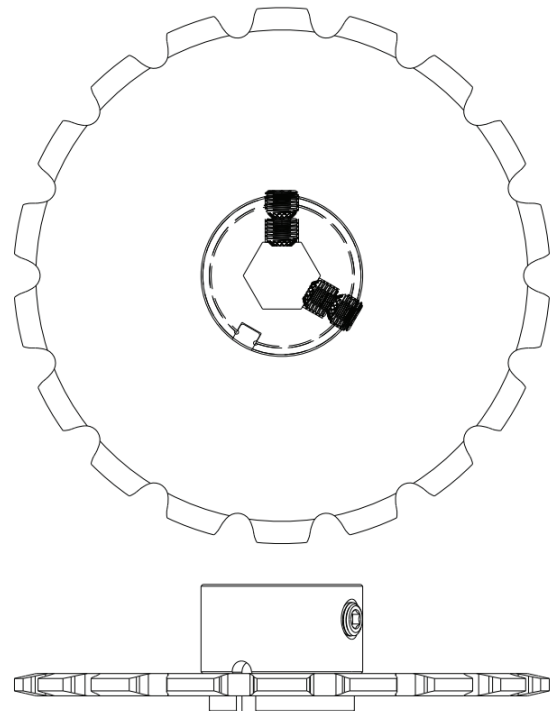
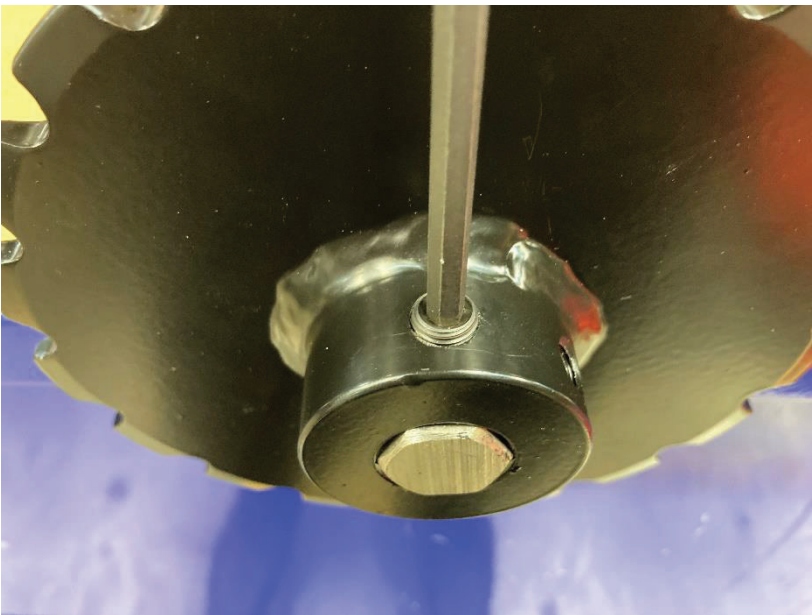
3. Apply thread locker to and start the two inner set screws, on both sprockets, by hand first. If your sprockets have the smaller 5/32 set screw in the middle, they will not be used, you do not have to tighten them down if you do not have a 5/32 Allen wrench on hand.



4. Slide the sprockets onto the end of their respective Basket Weeder shafts as shown, all the way, until they are against the spacers. Tighten the inner set screws with the 3/16 Allen wrench. Be sure that both sprockets are in alignment before tightening inner set screws.



5. Next, apply thread locker to and install the outer set screws and tighten with 3/16 Allen wrench. Set screws are now stacked (4 set screws per sprocket).



49-4053 Basket Weeder Sprocket Assembly Instructions

6. Install the chain and tighten as shown in the instructions that come with the Basket Weeder Frame Kits.

